

IMPERIAL COLONIAL ISSUE. 1938

DESIGN and PRODUCTION.

The issue was designed by A. Ressano Garcia and printed by recess steel engraving on white paper without watermark, by Bradbury, Wilkinson and Co. London. There was little postal need for the set and it was probably produced more for patriotic reasons, exalting the Portuguese Colonial Empire. The designs represent Vasco da Gama the discoverer of the sea route to India; Mousinho d'Albuquerque the conqueror of Mozambique; Alfonso d Albuquerque the admiral who defeated the Indian navy. The dam represents colonial development under Portugal. Sheet arrangement is 10 by 10. These stamps were removed from circulation in 1957.

IMPERIO TYPE.

Perforation 13.5 by 13.

1c
5c
10c
15c
20c
30c
35c
40c
50c
60c
70c
80c
1a
2a
5a
10a
20a

1938 — Legenda «Império Colonial Português». Dent. 13 1/2 x 13



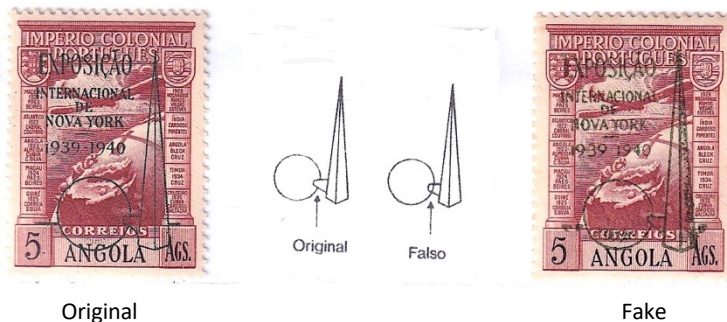
ANGOLA IMPERIAL COLONIAL AIRMAIL ISSUE. 1938

DESIGN and PRODUCTION

Released with the definitive "Imperio" issue. The inscriptions on the stamp represent the first flights to the countries shown, along with dates and pilots.

SPECULATIVE ISSUE

Produced in conjunction with the World exposition in New York. The overprint was applied to 2000 stamps for purchase at the exposition. The overprint EXPOSICAO / INTERNATIONAL de NOVA YORK 1939-1940 was added to each stamp along with the symbol of the exposition. Although sanctioned by the Portuguese Government, the overprinted stamp is not recognized as a commemorative issue as it was not needed for postal usage and was not sold to the public through Angolan post offices. Given the scarcity of the overprinted stamp, a fake overprint soon appeared on the market. Today, this has a similar value.



Original

Fake

AIR TYPE

Perforation. 13.5 by 13.

- 10c
- 20c
- 50c
- 1a
- 2a
- 3a
- 5a
- 9a
- 10a

CORREIO AÉREO

1938 — Legenda «Império Colonial Português». Dent. 13 1/2 x 13

