

Angola

SURCHARGES of 1886 Luis. 1902

ISSUE.

Due to an increase in the international postal rates, remnants of Luis and Carlos Neto issues were surcharged with the new rates. A simple letter increased from 50 to 65 reis, registered international letter to 115r, a double letter to 130 reis and a minimum package to 400 reis. Surcharging was done at the mint in Lisbon. New perforating was done on unperforated sheets, and gum was applied on much of the stock which had remained ungummed from the previous printing.

SURCHARGE.

The surcharge comes in two types. i) Type I with 3mm between the numerals and designation, ii) Type II with 4mm gap. 130/50 type I only, the rest are type I and II.

SHADES.

Evident as usual, cf., *

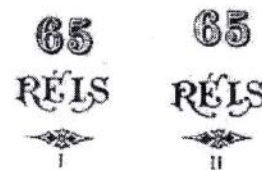


Illustration taken from Afinsa

ERRORS.

Inverted, doubled and shifted surcharges is printers waste stolen from the mint. Shifted overprints are common, eg., 65/40 far right. Some sheets accidentally received the wrong surcharge. These too saw their way onto the market but they are very rare, eg., 400/10, right.



RETURNS.

Large numbers of the stamps spoiled in the tropics and were returned to Lisbon and burnt

Perforation. 12.5. Various shades.

65/40*
65/300*
115/10*
115/200
130/50
400/5
400/20 R
400/25

Perforation. 13.5. Various shades.

115/10
400/20. R

1902 — Selos de D. Luís I, com sobretaxa

